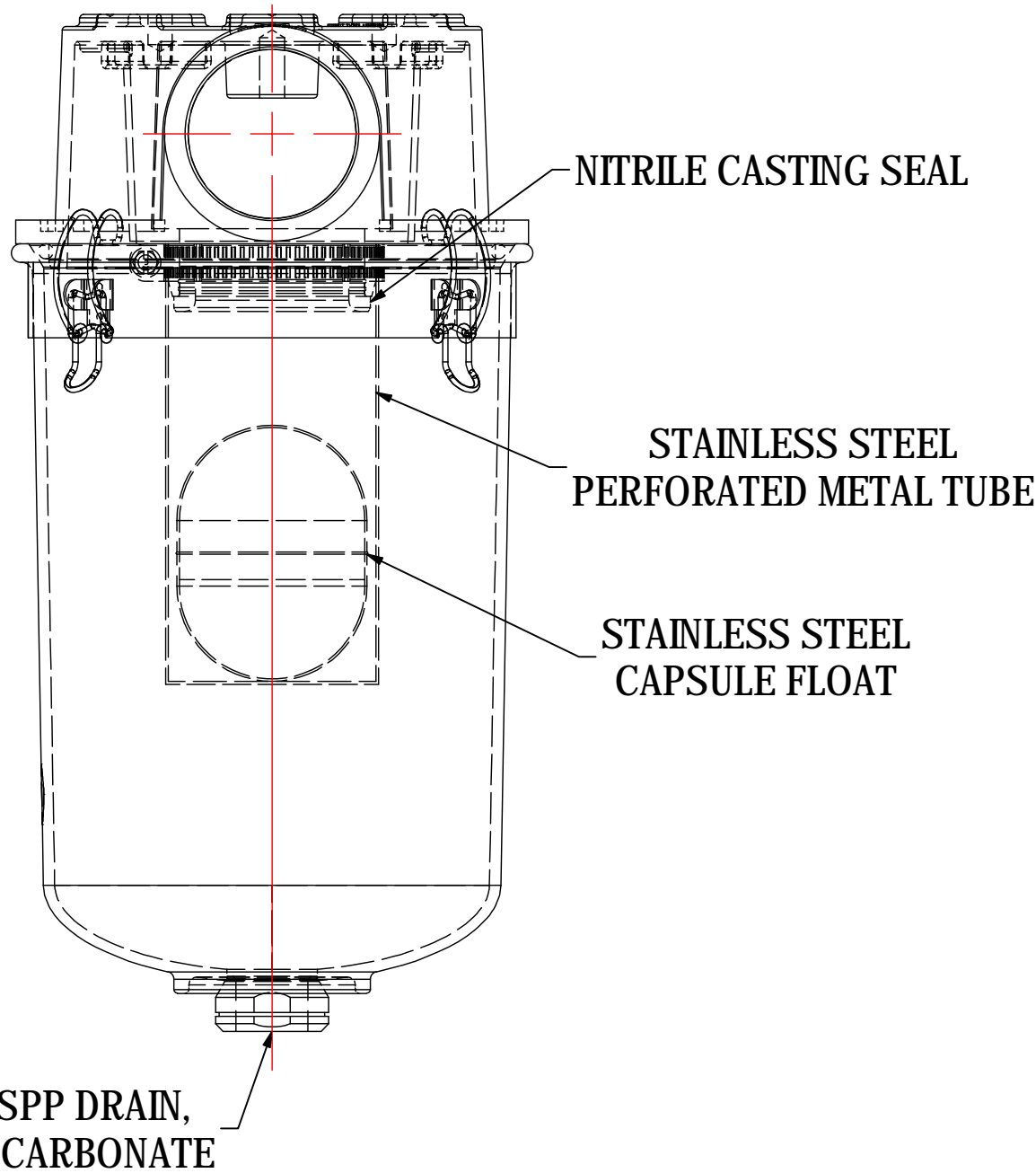
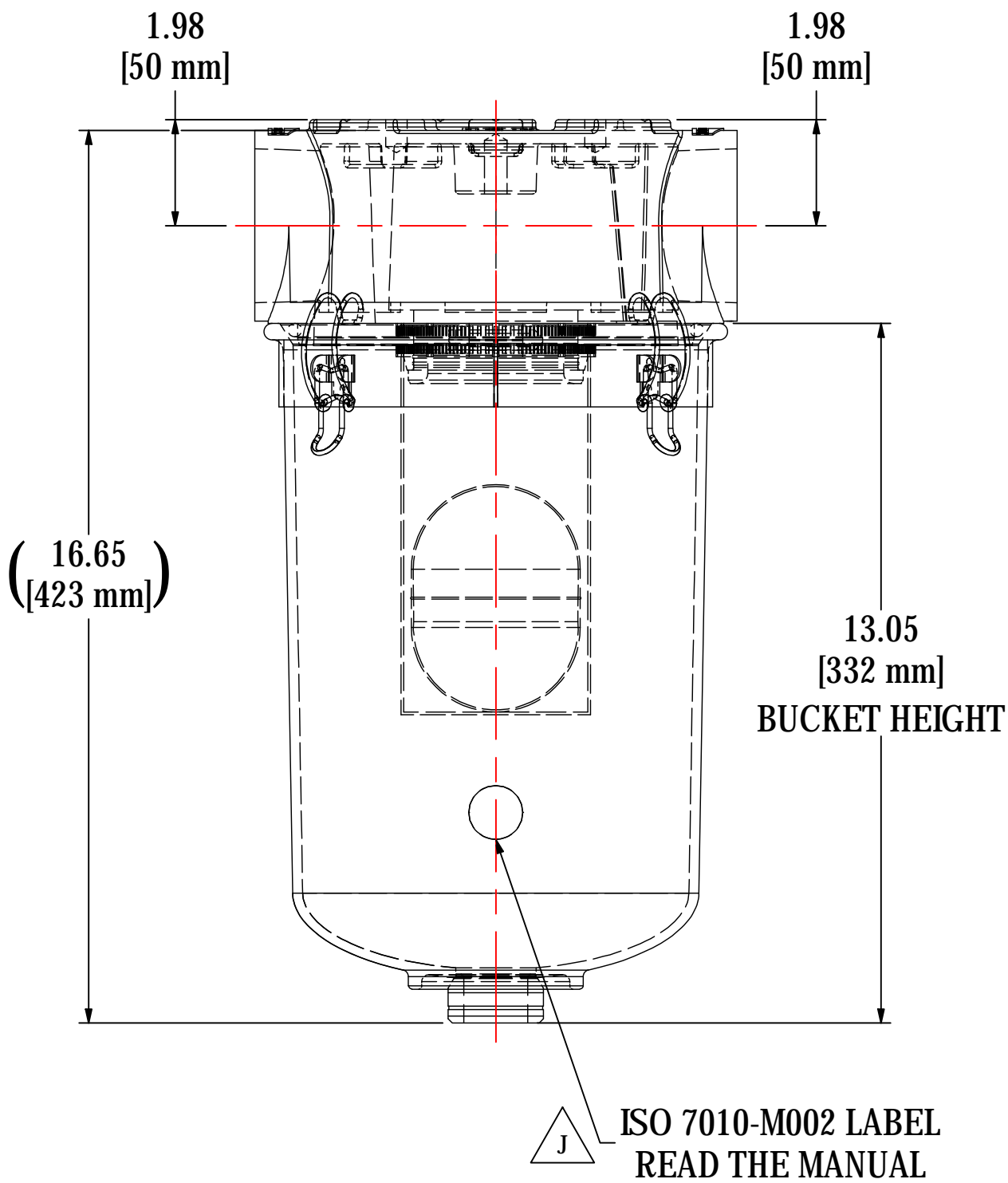
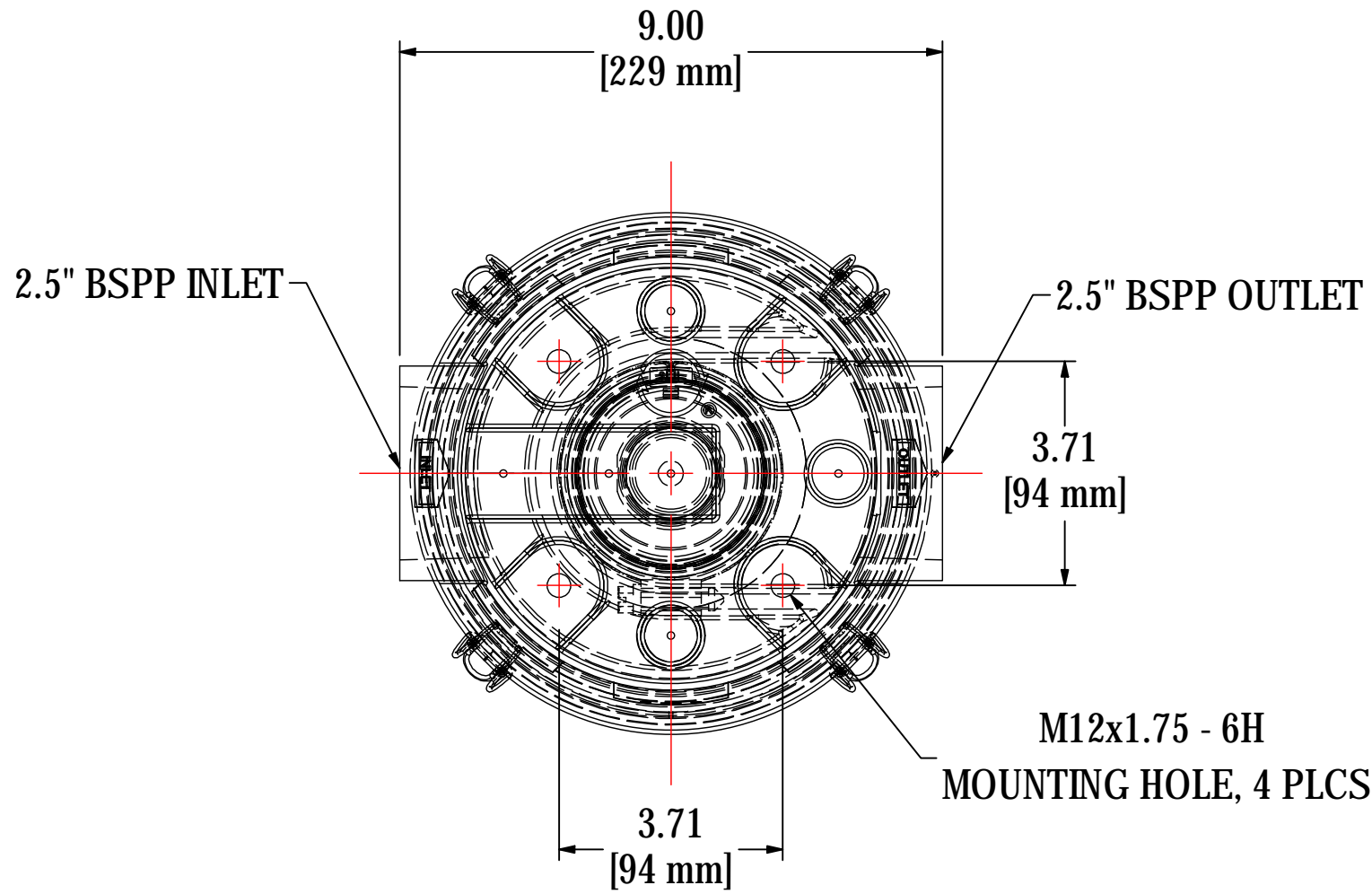


REV	DESCRIPTION	ECN #	CHG BY	DATE	APP'D
A	UPDATED INTERNAL COMPONENTS	-	CMA	06/16/09	MJC
B	UPDATED BUCKET & CLIP HOLDERS	19180	CRW	10/12/10	MJC
C	CHANGED DRAIN FITTING	PER MJC	CRW	02/02/12	MJC
D	CHANGED DRAIN SIZE, WAS 1/4"	PER MJC	CRW	08/30/12	MJC
E	UPDATED DRAIN FITTING	-	EZR	03/04/13	CRW
F	CHANGED BALL FLOAT TO CAPSULE DESIGN	PER MJC	NAR	08/20/14	CRW
G	UPDATED DRAIN/CONVERTED TO 3D	14725	EZR	10/22/18	TAS
H	UPDATED CASTING	-	JEB	02/11/19	DDH
I	ADDED FLOAT SEAL INSERT	17082	JEB	09/02/19	TAS
J	UPDATED BUCKET DRAIN, WAS SS	21691	EZR	04/12/21	TAS



MODEL #: STS-251C	MATERIAL: VARIES	FINISH: VARIES	SHEET: 1 OF 1
MODEL NUMBER: STS-251C	DESCRIPTION: STS-251C, 1" BSPP POLYCARBONATE DRAIN, CLEAR BUCKET	PROJECT: SD14298	DRAWN BY: CRW DATE: 11/20/2007
APPROVED BY: MJC DATE: 11/20/2007	REV: J		