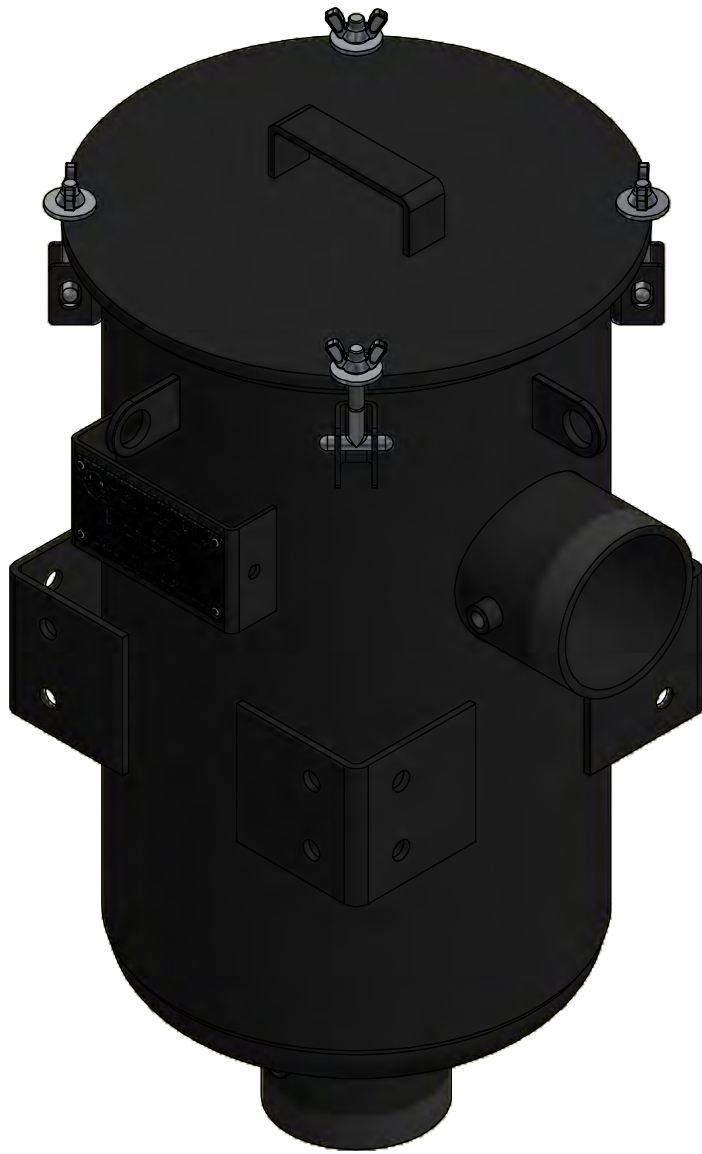
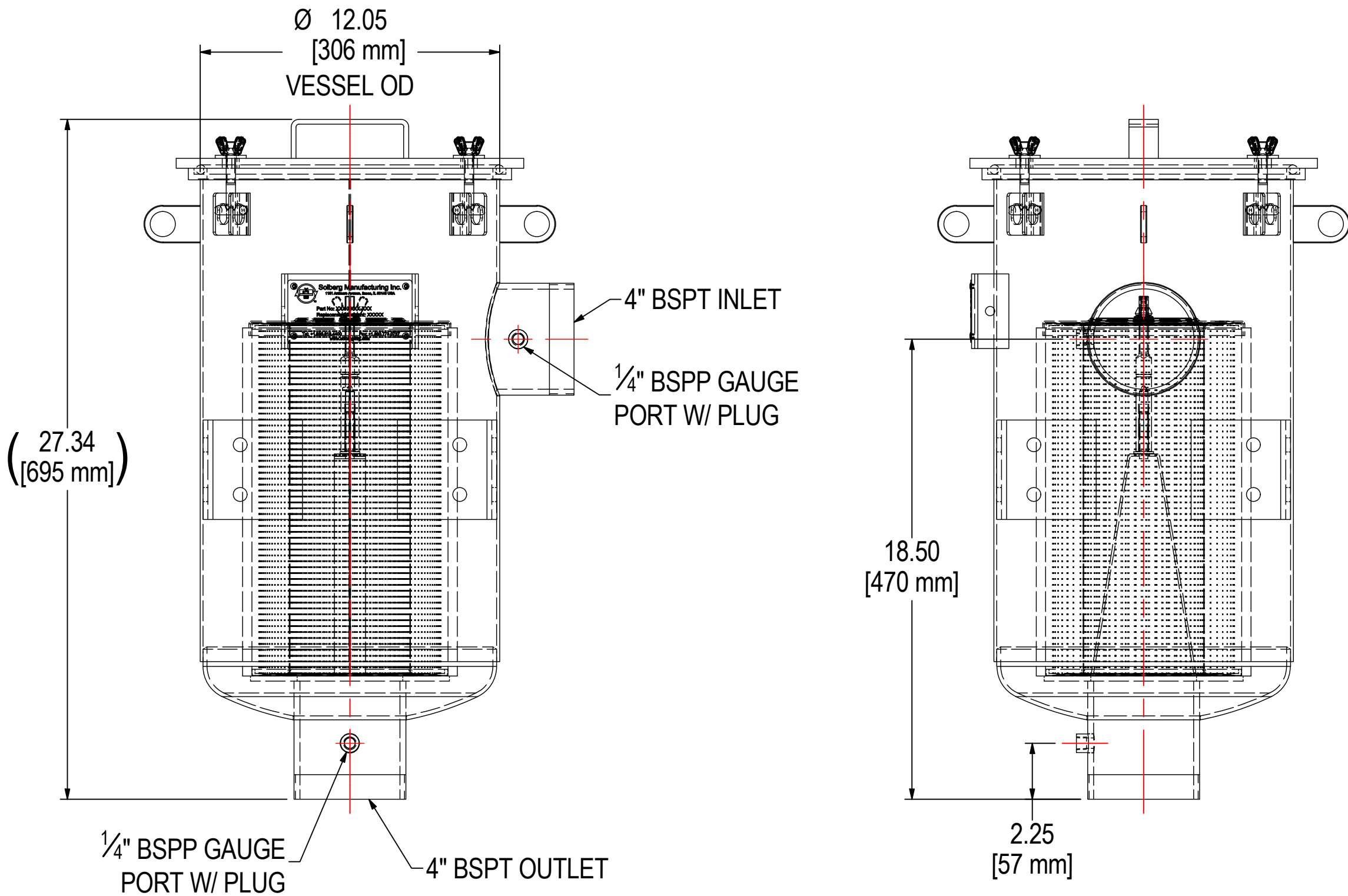
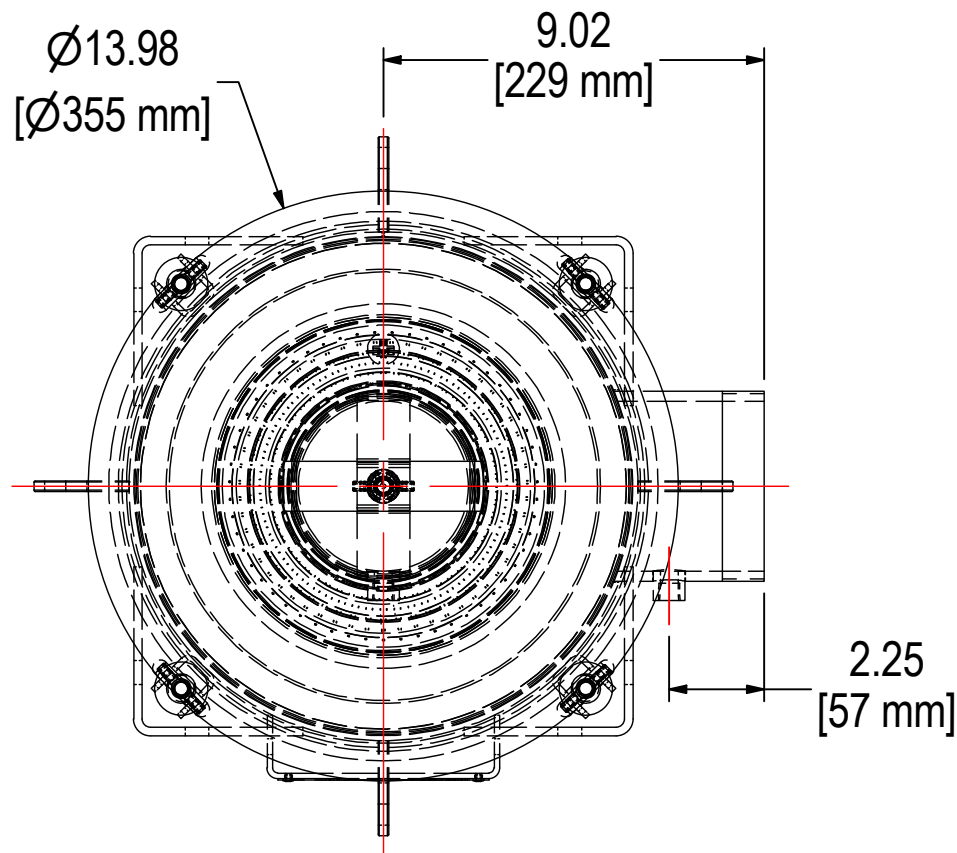


REV	DESCRIPTION	ECN #	CHG BY	DATE	APP'D
A	UPDATED TO CURRENT TANK DESIGN		CRW	08/21/12	M.C.
B	UPDATED TO 3D		CMA	8/14/2017	M.C.
C	ADDED NAMEPLATE & ELEMENT SPEC TABLE, REMOVED LEG BRACKET DETAIL		DDH	09/03/19	JEB



ELEMENT SPECS		
PART NUMBER	335P	
MATERIAL	Polyester	
FLOW RATE	800 CFM	1359 m³/hr
SURFACE AREA	12.0 ft²	1.1 m²
I.D.	4.75"	121mm
O.D.	7.88"	200mm
HEIGHT	14.50"	368mm

MODEL #: CSL-335P-401		MATERIAL: CARBON STEEL		FINISH: BLACK POWDER	
MODEL NUMBER: CSL-335P-401					SHEET: 1 OF 1
DESCRIPTION: CSL-335P-401, BLACK					
PROJECT: SD12287		DRAWN BY: CRW DATE: 4/18/2006		APPROVED BY: P.G. DATE: 4/18/2006	
				REV C	