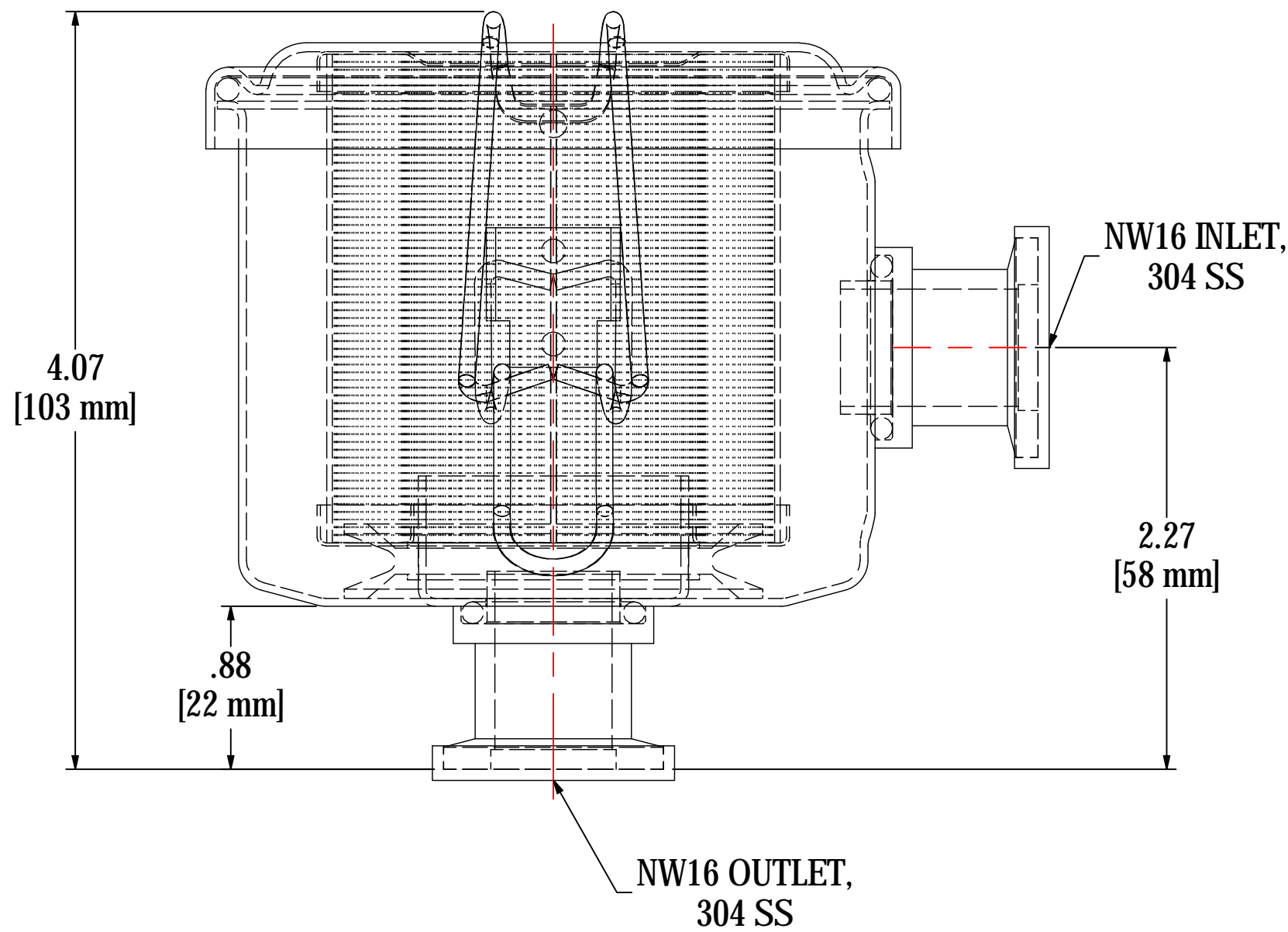
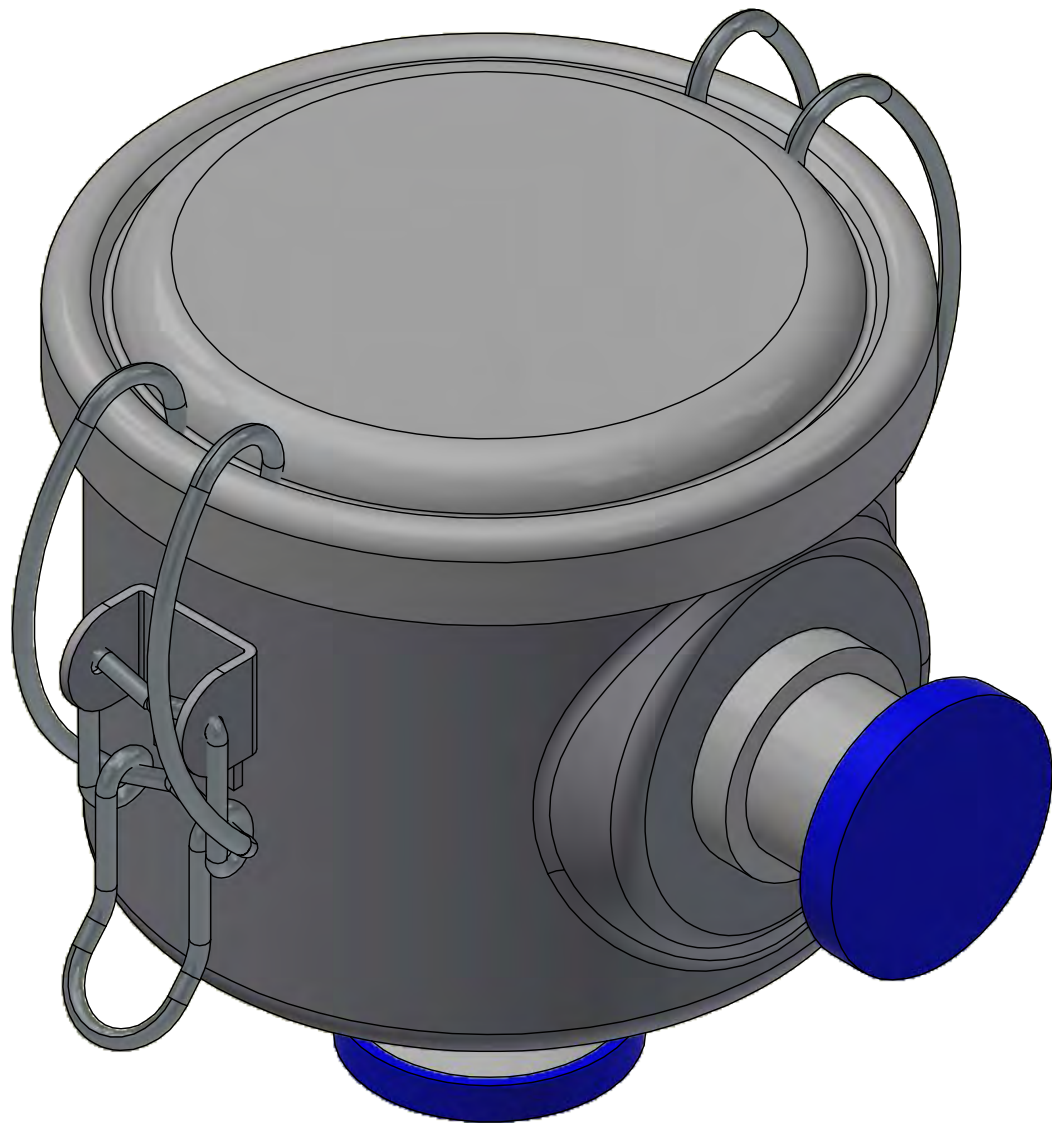
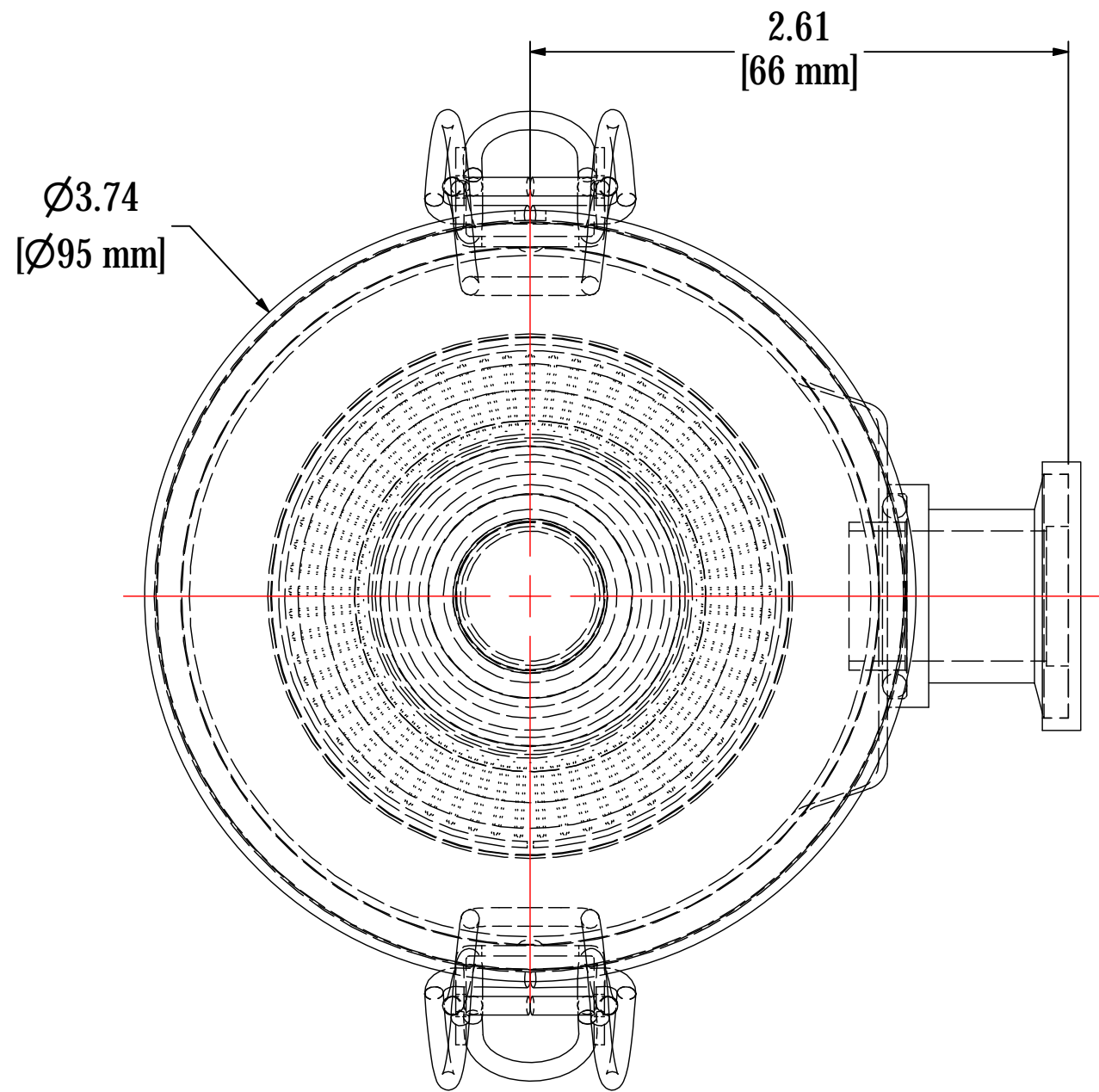


REV	DESCRIPTION	ECN #	CHG BY	DATE	APP'D
A	CONVERTED TO 3D; UPDATED P/N, WAS CSL; ADDED NOTES	17887	RWK	12/06/19	EZR



NOTES & SPECIFICATIONS:

- A**
- FLANGES TO BE PROTECTED DURING PRODUCTION & SHIPMENT.
 - UNIT TO BE HELIUM LEAK TESTED TO 1 x 10⁻⁵ mbar L/s.

ELEMENT SPECS		
PART NUMBER	824	
MATERIAL	PAPER	
FLOW RATE	25 CFM	42 m ³ /hr
SURFACE AREA	0.8 ft ²	0.1 m ²
I.D.	1.50"	38mm
O.D.	2.54"	65mm
HEIGHT	2.65"	67mm

MODEL #: WL-824-NW16EN	MATERIAL: CARBON STEEL	FINISH: ELECTROLESS NICKEL
------------------------	------------------------	----------------------------

MODEL NUMBER: WL-824-NW16EN	SHEET: 1 OF 1
DESCRIPTION: WL-824-NW16EN, ELECTROLESS NICKEL	

PROJECT: SD19913	DRAWN BY: CRW DATE: 10/31/2013	APPROVED BY: MC DATE: 10/31/2013	REV: A
------------------	-----------------------------------	-------------------------------------	--------



SOLBERG®

Filtration • Separation • Silencing
630.773.1363 • www.solbergmfg.com

THE INFORMATION CONTAINED HEREIN IS CONFIDENTIAL AND THE PROPERTY OF SOLBERG MANUFACTURING INC. AND IT IS FURNISHED TO YOU WITH THE EXPRESS UNDERSTANDING THAT IT WILL NOT BE REPRODUCED, COPIED IN ANY MANNER, LOANED OR OTHERWISE TRANSFERRED TO OTHERS ENTIRELY OR IN PART, NOR USED FOR ANY PURPOSE OTHER THAN FOR WHICH IT WAS FURNISHED. IT WILL BE RETURNED UPON REQUEST TO SOLBERG MANUFACTURING INC. THE ABOVE RESTRICTION IS IN ADDITION TO, AND DOES NOT IN ANY WAY ALTER, ANY OTHER RESTRICTIONS WHICH MAY APPLY TO THE INFORMATION CONTAINED HEREIN.

TOLERANCES
DIMENSIONS ARE FOR REFERENCE ONLY. ALL DIMENSIONS ARE SUBJECT TO CHANGE UPON PRODUCTION.
UNLESS OTHERWISE SPECIFIED:
-DIMENSIONS ARE IN INCHES
-REF: APPROXIMATE DIMENSIONS, NO TOLERANCES APPLY
-FINISH: BREAK EDGES TO .005-.020 RADIUS/CHAMFER