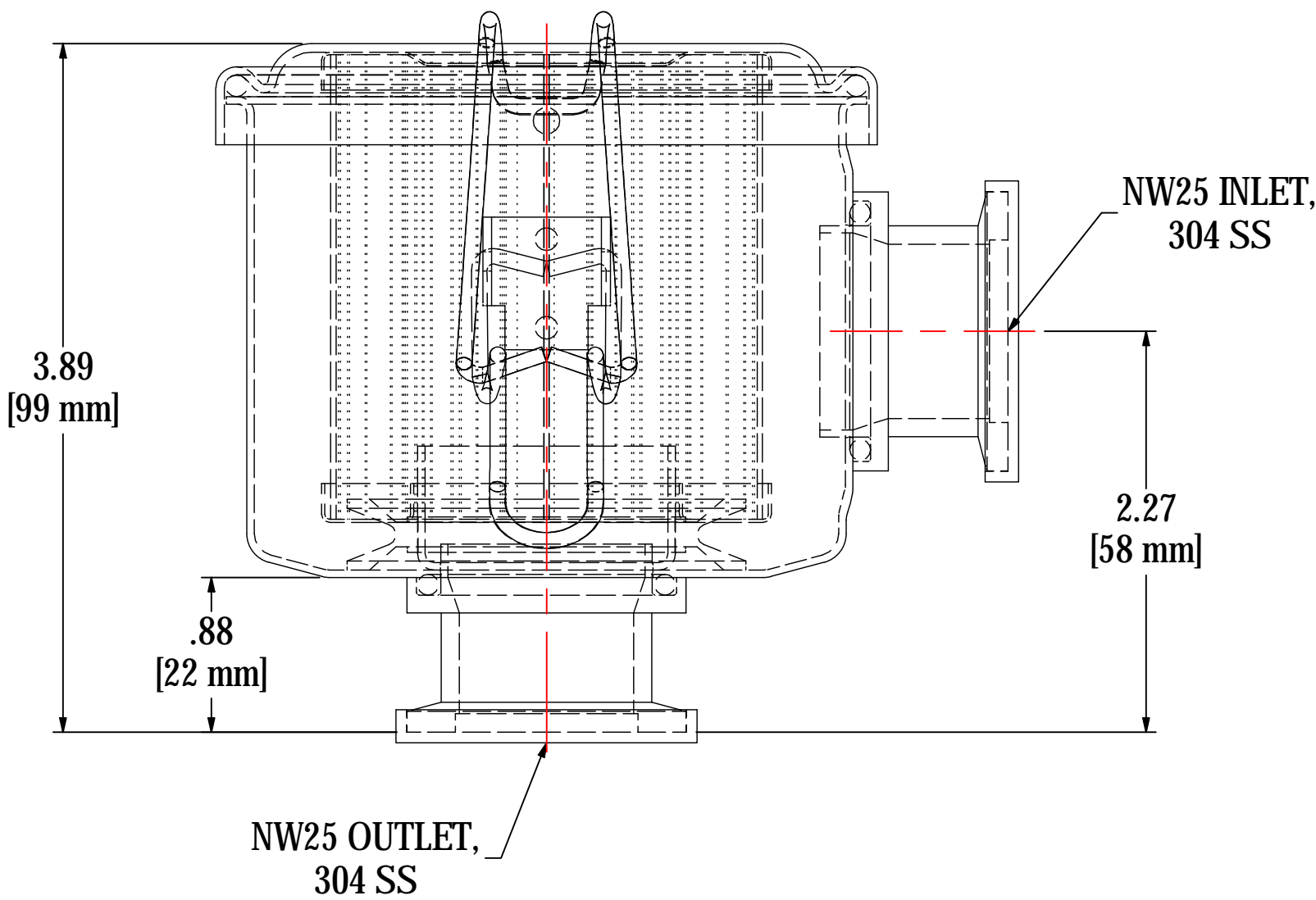
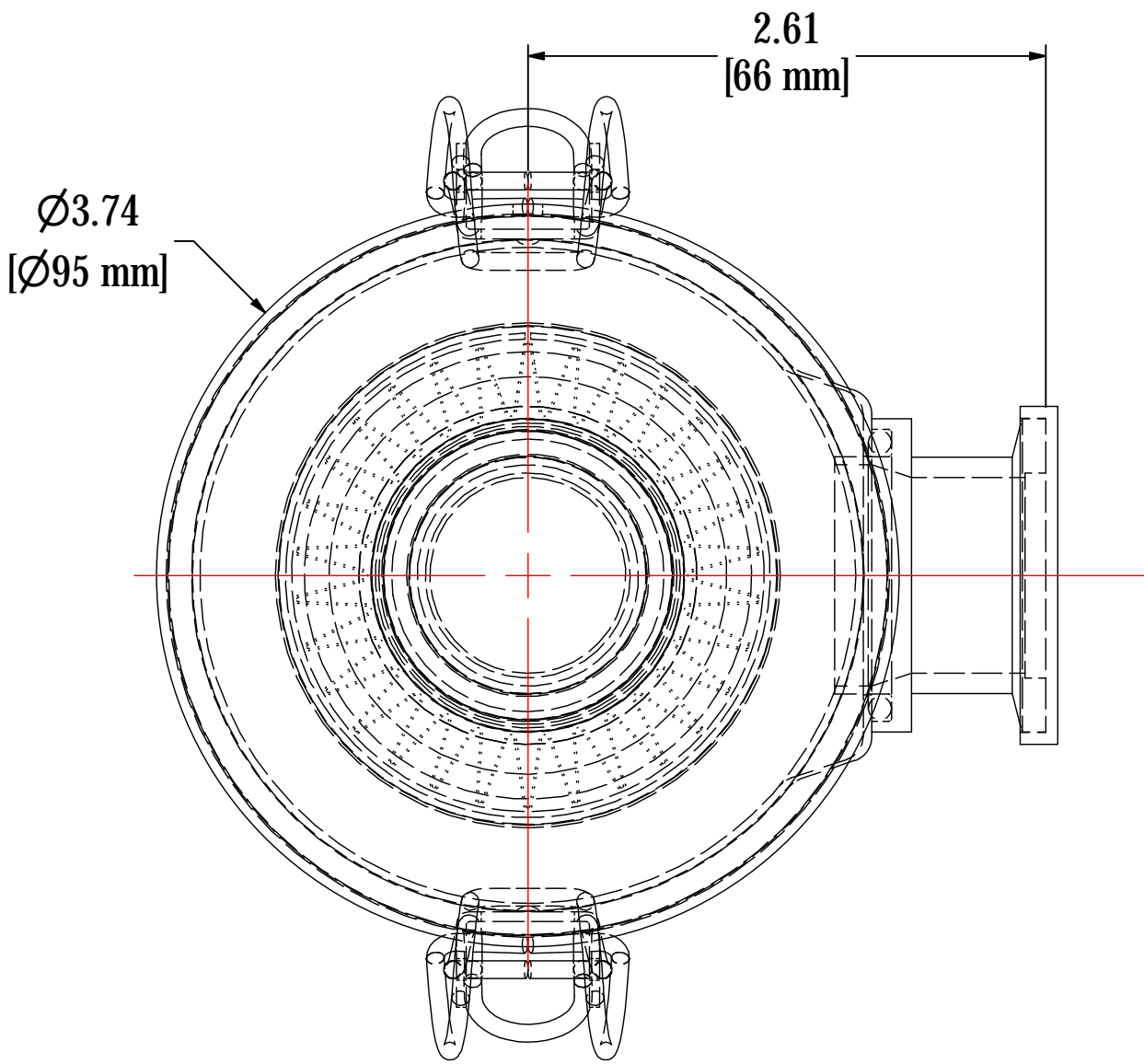


REV	DESCRIPTION	ECN #	CHG BY	DATE	APP'D
A	CONVERTED TO 3D/UPDATED PART NUMBER, WAS CSL	15527	EZR	02/13/19	TAS



**NOTES & SPECIFICATIONS:**

1. FLANGES TO BE PROTECTED DURING PRODUCTION & SHIPMENT.
2. UNIT TO BE HELIUM LEAK TESTED TO 1 x 10<sup>-5</sup> mbar L/s.

ELEMENT SPECS		
PART NUMBER	825	
MATERIAL	Polyester	
FLOW RATE	25 CFM	42 m³/hr
SURFACE AREA	0.4 ft²	0.0 m²
I.D.	1.50"	38mm
O.D.	2.50"	64mm
HEIGHT	2.69"	68mm

MODEL #: WL-825-NW25B		MATERIAL: CARBON STEEL		FINISH: BLACK POWDER	
MODEL NUMBER: WL-825-NW25B					SHEET: 1 OF 1
DESCRIPTION: WL-825-NW25B, BLACK					
PROJECT: SD18206		DRAWN BY: JCB DATE: 5/24/2012		APPROVED BY: MJC DATE: 5/24/2012	
				REV: A	