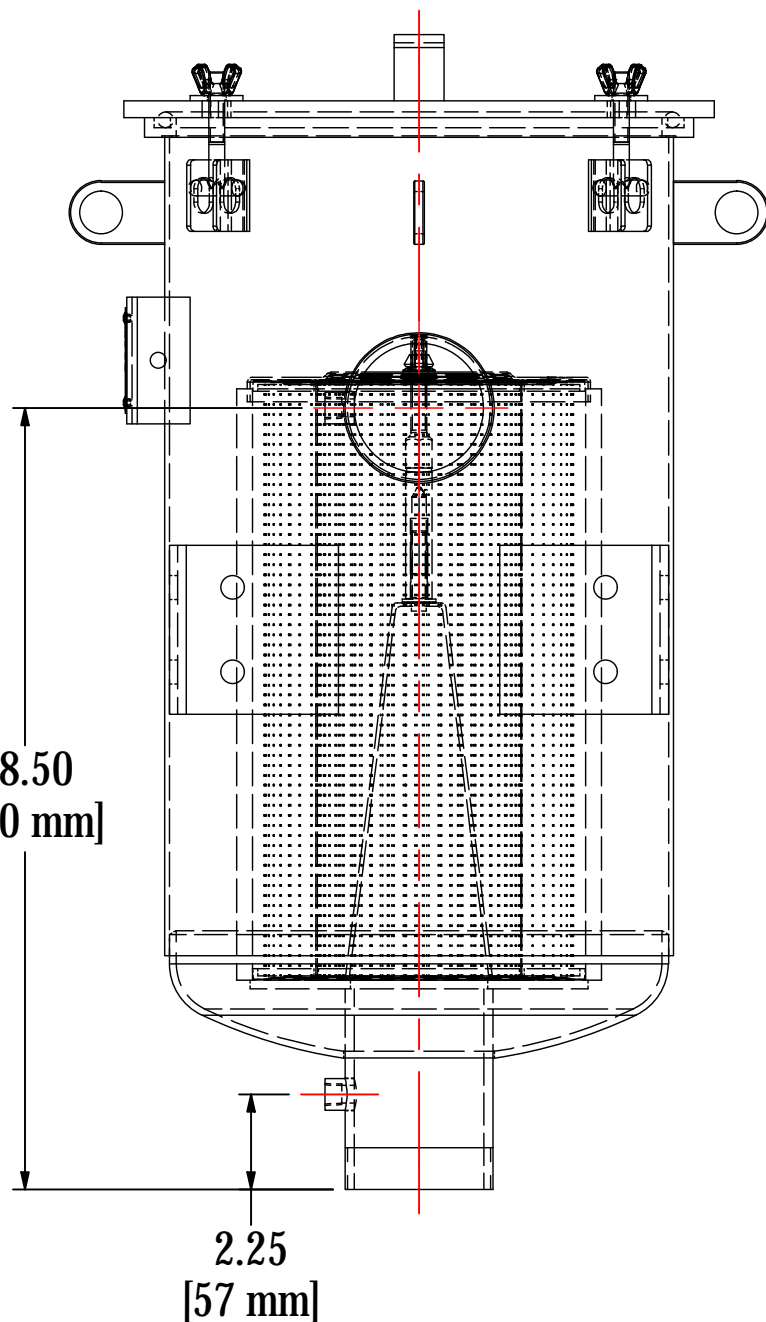
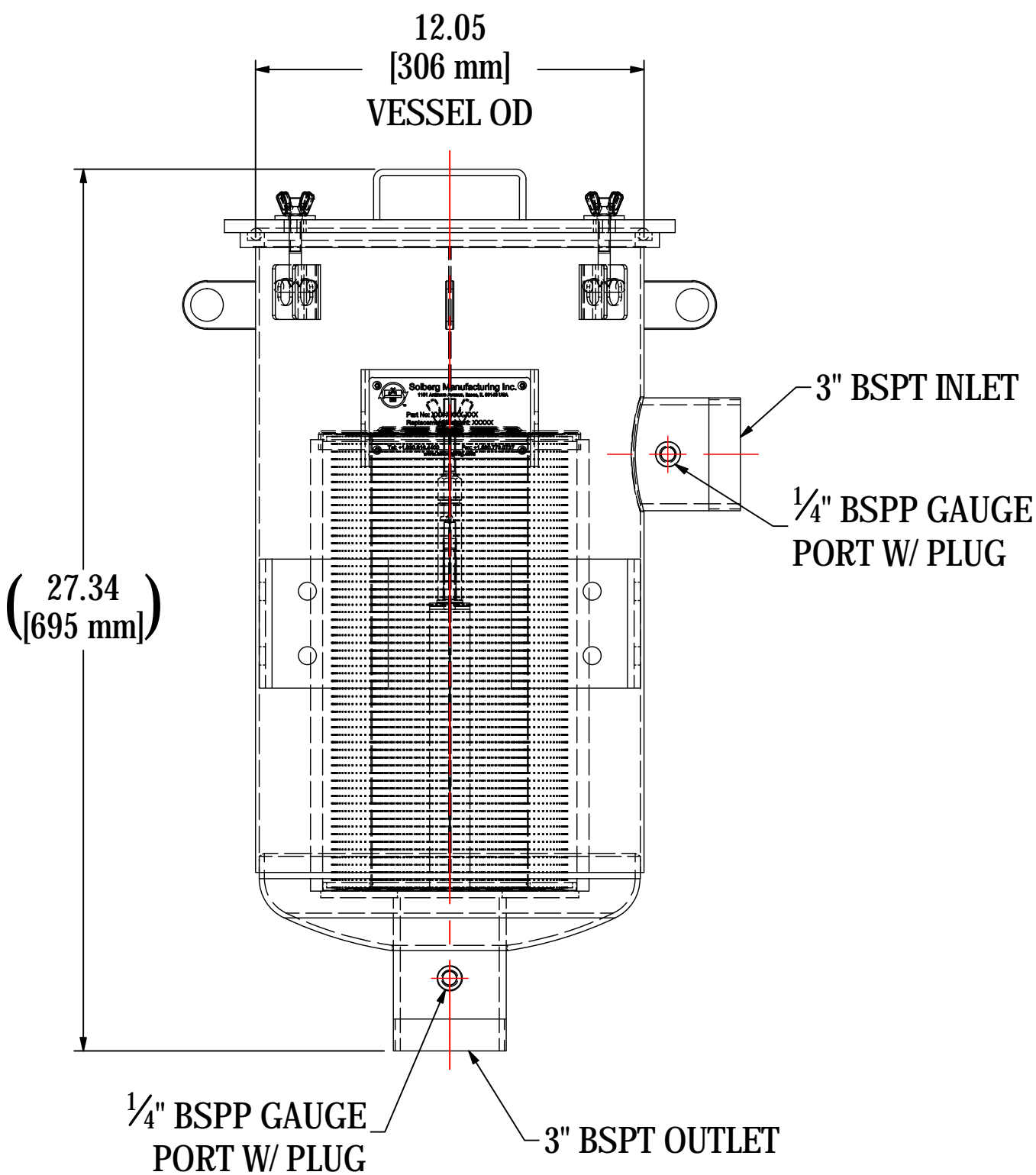
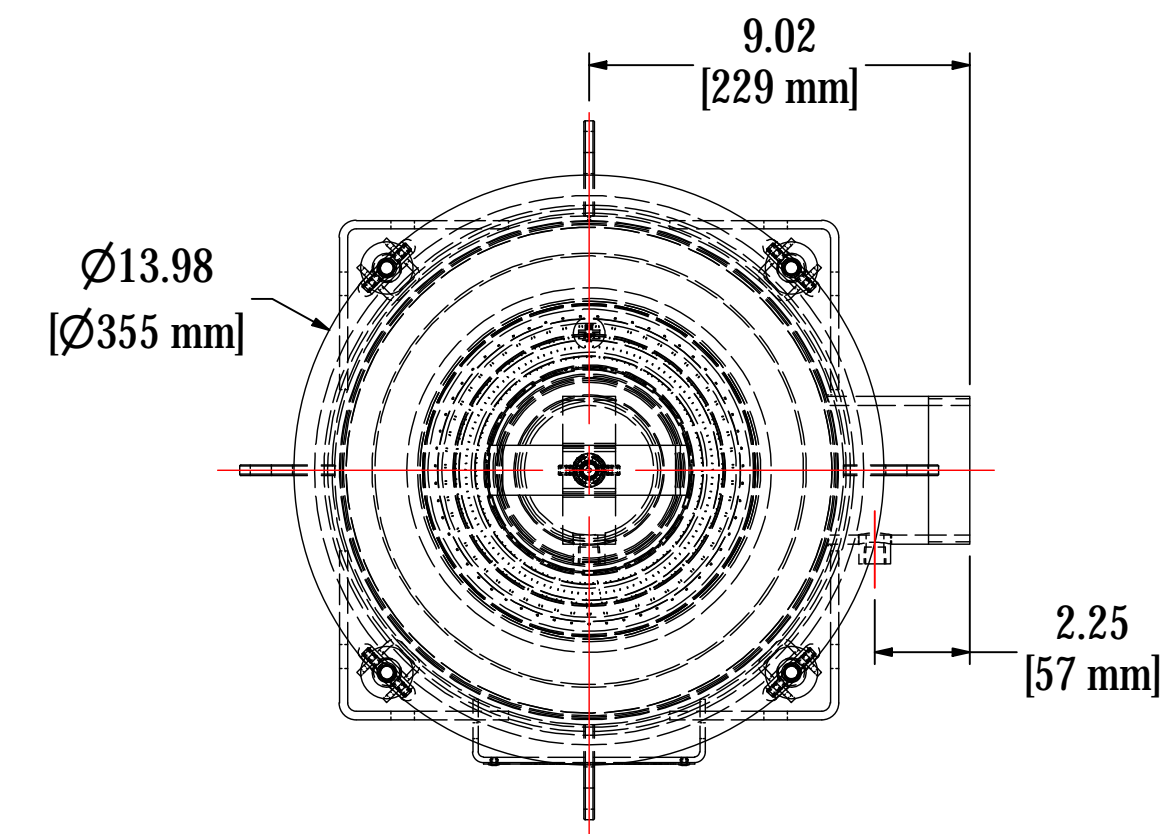


REV	DESCRIPTION	ECN #	CHG BY	DATE	APP'D
A	CONVERTED TO 3D/ADDED NAMEPLATE	12797	EZR	01/11/18	CRW
B	UPDATED FINISH, WAS BLACK PAINT		DDH	09/03/19	JEB



ELEMENT SPECS		
PART NUMBER	335P	
MATERIAL	Polyester	
FLOW RATE	800 CFM	1359 m³/hr
SURFACE AREA	12.0 ft²	1.1 m²
I.D.	4.75"	121mm
O.D.	7.88"	200mm
HEIGHT	14.50"	368mm

MODEL #: CSL-335P-301		MATERIAL: CARBON STEEL		FINISH: BLACK POWDER	
MODEL NUMBER: CSL-335P-301					SHEET: 1 OF 1
DESCRIPTION: CSL-335P-301, BLACK					
PROJECT: SD20479		DRAWN BY: CRW DATE: 11/22/2013		APPROVED BY: MJC DATE: 11/22/2013	
				REV: B	